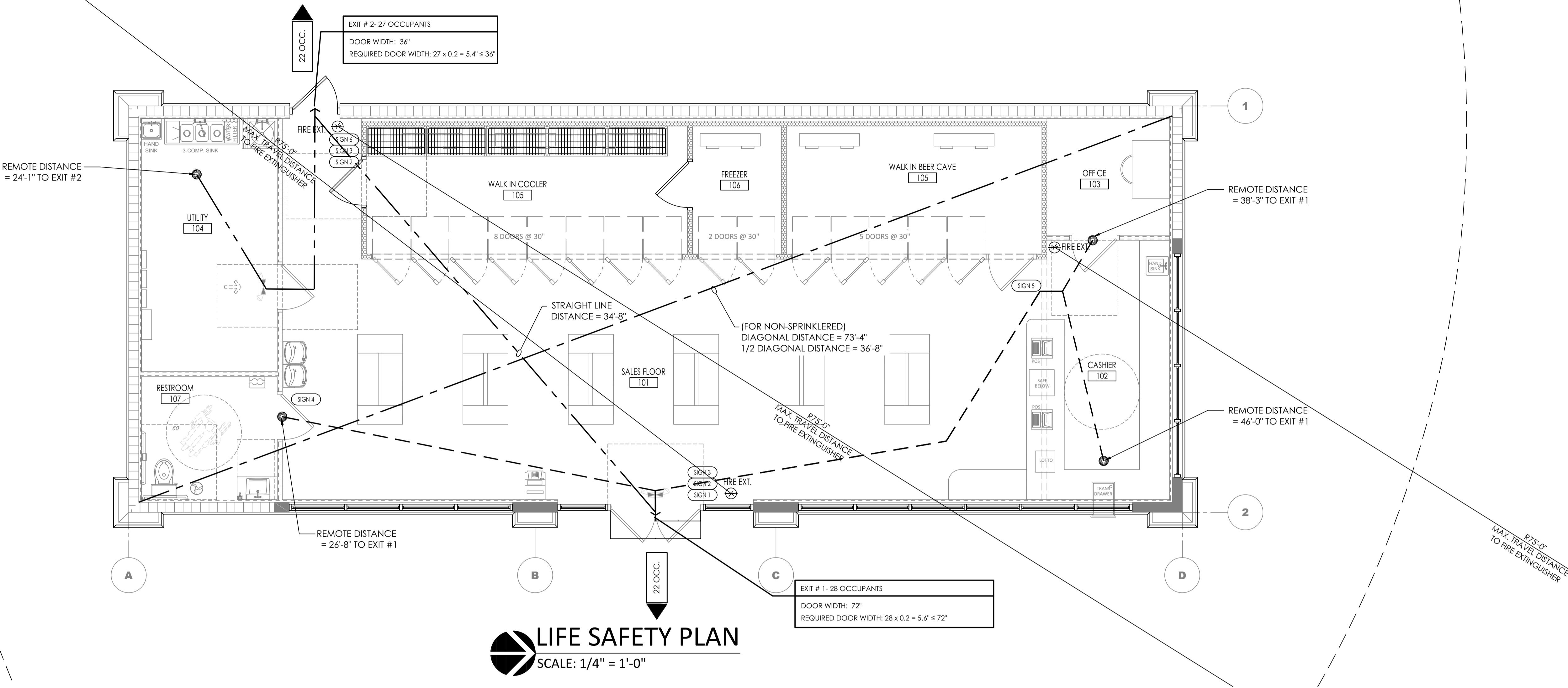


Y:\Shared\Documents\001 - Engineering\Sunshine Gasoline Distributors\21119 - SGP #010 Chev 301 Pompano Pkwy (formerly #12693)\02 - Dwg Files\001 - A1.1 - Life Safety.dwg, 6/27/2023 11:24:32 AM



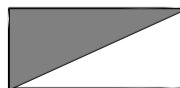
## LIFE SAFETY PLAN

SCALE: 1/4" = 1'-0"

### BUILDING CODE ANALYSIS/ FIRE CODE ANALYSIS

OCCUPANT INFORMATION	AUTOMATIC SPRINKLER SYSTEM		FIRE ALARM:	
	THIS BUILDING IS NON SPRINKLERED		THIS BUILDING IS NOT PROTECTED BY A FIRE ALARM SYSTEM. ONLY A VISUAL & AUDIBLE ALARM IS PROVIDED & CONNECTED TO THE HVAC DUCT SMOKE DETECTOR.	
2020 FBC	FFPC, NFPA 101	PROPOSED		
OCCUPANCY CLASSIFICATION	CHAPTER 3, SEC 309.1 M (MERCANTILE)	CHAPTER 36.2.4.1 M (MERCANTILE)		
ALLOWABLE BUILDING HEIGHT & AREA	9000 S.F. 40 FEET	--	1,890 SF	
CONSTRUCTION TYPE	TABLE 601 TYPE - VB (NON SPRINKLERED)	TABLE A.8.2.1.2 TYPE - V (000)		
EXIT CAPACITY	SEC 1005.1 0.2" PER PERSON	TABLE 7.3.3.1 0.2" PER PERSON	100' (EGRESS CAPACITY 510 /PERSON)	
MINIMUM NUMBER OF EXITS	TABLE 1006.3.1 (1-500 PERSONS) - 2	Sec 36.2.4 (1-500 PERSONS) - 2	2	
COMMON PATH LIMIT	TABLE 1014.3 MERCANTILE	Table A.7.6 (ANNEX A) MERCANTILE		
DEAD-END LIMIT	TABLE 1006.2.1 75'	75'	< 75'	
TRAVEL DISTANCE LIMIT	SEC. 1020.4 200'	200'	< 200'	
ARRANGEMENT MEANS OF EGRESS:	WHERE TWO EXITS OR EXIT ACCESS DOORWAYS ARE REQUIRED FROM ANY PORTION OF THE EXIT ACCESS, THE EXIT DOORS OR EXIT ACCESS DOORWAYS SHALL BE PLACED A DISTANCE APART EQUAL TO NOT LESS THAN ONE-HALF OF THE LENGTH OF THE MAXIMUM OVERALL DIAGONAL DIMENSION OF THE BUILDING OR AREA TO BE SERVED MEASURED IN A STRAIGHT LINE BETWEEN EXIT DOORS OR EXIT ACCESS DOORWAYS. INTERLOCKING OR SCISSOR STAIRS SHALL BE COUNTED AS ONE EXIT STAIRWAY AS PER 2020 FBC 6TH EDITION, SECTION 1007.1.1		ACTUAL STRAIGHT LINE DISTANCE BETWEEN EXITS EXIT #1 TO #2 = 44'-5"	
REQUIRED DISTANCE BETWEEN EXIT DOORS			ACTUAL STRAIGHT LINE ACROSS PUBLIC AREA: DIAGONAL AT PUBLIC AREA = 78'-3"	
			1/2" DIAGONAL = 39'-1 1/2"	
			CONCLUSION = 44'-5" IS GREATER THAN 39'-1 1/2" (MEETS CODE FOR NON-SPRINKLERED BUILDING)	

### OCCUPANT LOAD CALCULATION

NOTE: BASED ON 2020 FBC TABLE 1004.1.2 AND FFPC NFPA 101 TBL 7.3.1.2 HIGHEST OCCUPANCY FACTOR WAS USED TO DETERMINE HIGHEST OCCUPANCY LOAD							
LABEL	ROOM NAME	OCCUPANCY OF SPACE AS PER TABLE 1004.1.2 2020 FBC	AREA	2020 FBC		FFPC NFPA 101	
				FLOOR AREA S.F. PER OCCUPANT	# OF OCCUPANTS	FLOOR AREA S.F. PER OCCUPANT	# OF OCCUPANTS
101	SALES AREA	MERCANTILE	806 SF	60 gross	14	30 gross	27
105/106 107	WALK-IN COOLER AREA/UTILITY	STORAGE	527 SF	300 gross	2	300 gross	2
102 /103	CASHIER AREA/OFFICE	BUSINESS	204 SF	150 gross	2	150 gross	2
TOTAL OF OCCUPANTS					18		31
BUILDING AREAS							
C-STORE SALES:				806 S.F.			
OFFICE:				63 S.F.			
CASHIER:				141 S.F.			
WALK-IN COOLER(S):				375 S.F.			
RESTROOM:				174 S.F.			
HALLWAY:				49 S.F.			
UTILITY:				152 S.F.			
TOTAL S.F.:				1,760 S.F. /PER AREAS			
GROSS BLDG AREA:				1,890 S.F.*			
* OUT/OUT EXTERIOR WALLS							
LEGEND							
----- = ROUTE FROM THE REMOTEST ROOM OR SPACE TO NEAREST EXIT.							
- - - - - = DIAGONAL DISTANCE OF THE BUILDING OR AREA							
- - - - - = STRAIGHT LINE DISTANCE BETWEEN EXITS							
